



MRL-3460

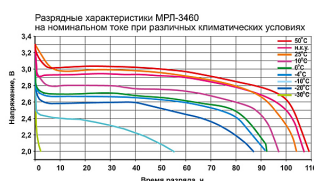
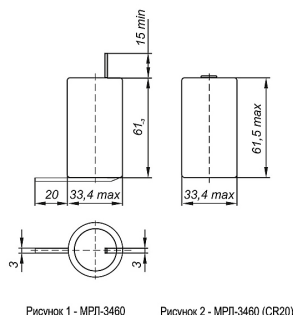


Application

Small-sized lithium current sources (cylindrical) are primary current sources of constant readiness and are intended for power supply of security systems, alarm systems, gas, heat, water meters, cash registers, electrical measuring devices, computer storage devices, mobile (portable) communication devices.

Current sources are available in two versions:

- with petal contacts (figure 1)
- with flat contacts (Figure 2), corresponding to frame size R20 according to GOST RMEK 60086



Parameter Name	Value
Voltage (V)	3.00
Rated capacity (A·h)	9.00
Maximum amperage (A)	0.50
Open circuit voltage (V)	3.20
Final discharge voltage, not less than (V)	2.00
Rated Discharge Current (A)	0.10
Maximum impulse discharge current at I.p.d(A)	1.50
Temperature range (°C)	-30..+50
Weight (kg)	0.10
Warranty period (years)	10



During storage, transportation and operation of LIT it is strictly forbidden to conduct heating above 85°C, charge, short-circuit, expose to open flame, discharge in modes not provided for in the technical conditions, deform and open, allow direct contact with water.



410015, Saratov, st. Ordzhonikidze G. K., 11-A



+7 (8452) 96-23-97 / phone-fax /



+7 (8452) 96-24-06
+7 (8452) 96-00-08



8-800-250-50-44 / marketing department /

